

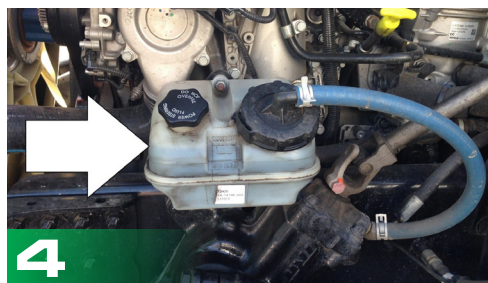
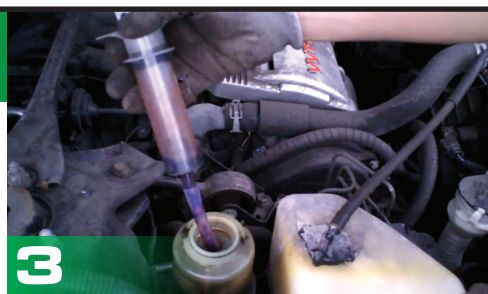
# Important Power Steering Pump REPLACEMENT GUIDELINES

***Make Sure You Do the Job Right the First Time!***

Many factors of the steering system can affect overall performance. To avoid having an improperly installed replacement power steering pump affect the vehicle's steering performance, we strongly recommend to follow these step-by-step guidelines.

## Steps for Removing the Old Power Steering Pump

1. Raise and support the vehicle front steering axle or axles. Remember - Always place a safety stand under the raised part of the vehicle. **Note:** Have the steering axle unloaded when replacing the power steering pump as it will have less of an impact on the hydraulic system.
2. Remove any parts that might get in the way of pulling out the power steering pump or hoses.
3. Drain the power steering fluid from the reservoir. Depending on the vehicle, you can use a siphon pump to extract the fluid from the reservoir or disconnect the feed and return lines; draining the fluid into a drain pan.
4. Remove and replace the filter in the reservoir. **Note:** Failure to replace a dirty or old filter can cause pump failure.
6. Inspect all hoses and fittings.
7. Loosen the lines at the pump BEFORE removing the pump mounting bolts or remove the hoses completely.
8. Loosen and remove power steering pump bolts.
9. Remove the pump from your vehicle.



ULT sells most makes and models of power steering pumps including, TRW, LUK, VICKERS, ZF, HOBURN, EATON, PARKER AND SAGINAW. Most importantly, the vast majority of the pumps we sell are 100% NEW!

**ULT is Your Total Power Steering Solution**

Edmonton  
Alberta  
833.442.0442

Mount Pearl  
Newfoundland  
844.442.0442

Moncton  
New Brunswick  
844.442.0442

Quebec City  
Quebec  
844.442.0442

Ottawa  
Ontario  
613.749.4858

Mississauga  
Ontario  
833.442.0442

Winnipeg  
Manitoba  
833.442.0442

## Steps for Installing the New Replacement Power Steering Pump

1. If necessary replace any required clamps, fittings and Install any new hoses on the vehicle now, before installing the new pump.
2. Place the new pump in the proper position.
3. If possible, attach feed and return hoses to the pump before bolting it in place.
4. Install pump mounting bolts and torque to proper specifications.  
**Note:** On belt driven models, don't torque the bolts until you attach and/or tighten the feed and return hoses to pump.
5. Double check all connections in the system for leaks.
6. Install the belts that were removed, and adjust belt tension if necessary.
7. Reinstall any other parts that were removed (brackets, shields, exhaust, etc.).

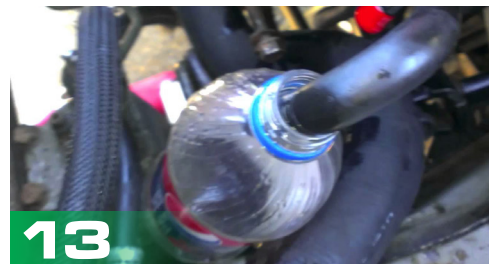
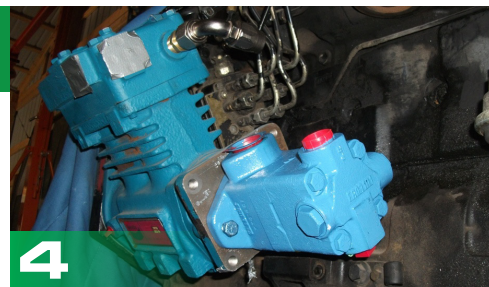
### 8. Double check your hoses.

**Note:** Make sure a new filter has been installed.

### 9. Fill the system with new power steering fluid.

### 10. Make sure you have the right fluid for your vehicle.

11. Check for leaks.
12. Start engine and look for leaks again.
13. You need to "bleed" the system to get all the air out.  
**Note:** Proper bleeding procedures vary from vehicle to vehicle. Verify the correct procedures before proceeding. **If you don't know, call us – we can help!**
14. Make sure both front wheels are raised off the ground.
15. With the engine running, slowly turn the steering wheel left to right and lightly touch the steering stop points.
16. Check your fluid level.
17. You may need to repeat steps 14 thru 16 several times to get all of the air out.
18. Once you're sure that all of the air is out of the system, lower the vehicle.



**If you require further assistance, please contact us as 905.612.1256**

Edmonton  
Alberta  
833.442.0442

Mount Pearl  
Newfoundland  
844.442.0442

Moncton  
New Brunswick  
844.442.0442

Quebec City  
Quebec  
844.442.0442

Ottawa  
Ontario  
613.749.4858

Mississauga  
Ontario  
833.442.0442

Winnipeg  
Manitoba  
833.442.0442