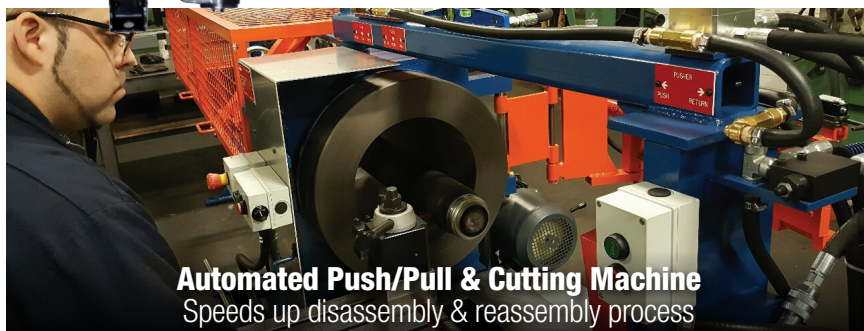


# Industry Leading Drivetrain Services Backed by Continuous Investment in State-of-the-Art Driveshaft Remanufacturing Equipment



## What Makes ULT Powertrain a Cut Above the Rest

- State-of-the-art computer balancers deliver highly precision balancing and a quick turnaround.
- Provide a final balancing testing printout, showing the measured runout in 1/1000th of an inch as a superior quantifiable method of balancing a shaft and measuring vibration. This ensures our products meet or exceed OE tolerances.
- Use only OE quality components from industry leading suppliers to ensure premium performance, dependability, great-value and less downtime.
- Specialize in automotive, light to heavy duty truck, off-road, performance, PTO and agricultural applications.
- All drive shafts go through a rigorous inspection process by highly trained and experienced technicians.



**Automated Push/Pull & Cutting Machine**  
Speeds up disassembly & reassembly process



**Precision Welding & Straightening Table**  
Straightens to OE specs with perfect welds

## Look to ULT for All Your New Light & Medium Duty Driveline Part Needs

ULT continues to expand their inventory on replacement **Light & Medium Duty Driveline** parts from the most recognized brand names in the industry, including Spicer/Dana, Neapco and AAM. We have a comprehensive inventory of **NEW** driveline components including:



### Bearing & Seal Kits



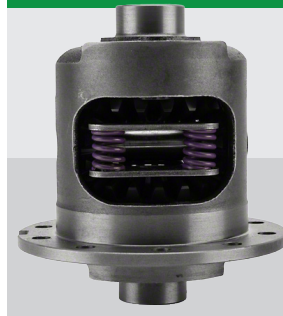
### Crown & Pinions



### 4x4 Driveshafts



### Posi-Traction Units



### Transfer Cases



Ottawa, Ontario  
Mississauga, Ontario

Reman Facility  
Reman Facility

**613.749.4858**

**ultpowertrain.com**

**WE ARE YOUR ONE-STOP SOLUTION!**